



COOPERATIVE ROLE IN THE MANAGEMENT AND INTEGRATED FARMING TO PLANTATION INDUSTRY

Oleh :

**Prof. Madya Datuk Hj. Mohamad Ali Hasan
Vice President Of ANGKASA**

(Dato' Hj. Aliasak Hj. Ambia, En. Hasnan Hj. Mustapha & En. Shafiee Ali)

IPIGEX2016 : 2-3 November 2016

Thistle Hotel, Johor Bahru

infosawit.com

TO SHARE...

- i. CO-OPERATIVES IN PLANTATION INDUSTRY**
- ii. NATIONAL CO-OPERATIVES POLICY II (NCP) & CO-OPERATIVES TARGET**
- iii. KRA ENTRY POINT PROJECT (EPP)**
- iv. INTEGRATED FARMING OF PLANTATION**
- v. THE WAY FOWARD**
- vi. IMPLEMENTATION MECHANISM AND ACHIEVEMENT**
- vii. CONCLUSION**

CO-OPERATIVES IN PLANTATION INDUSTRY

- In the nation plantation sector, it is estimated that 100,000 hectares of oil palm land will be replanted.
- Benefit a total of 1,362 (19%) cooperatives that are involved in plantation activities.
- Develop plantation sectors with strong capital base together with cooperative owning land.
- Develop by manager of cooperatives between smaller and bigger cooperatives.
- Concept of mentor-mentee the successful cooperative in the plantation sector will act as mentor to other cooperatives to assist in developing their plantations.
- Cooperative should also collaborate with government agencies such as Malaysian Palm Oil Board (MPOB) and other technical agencies to enable cooperatives in the plantation sector to venture into new areas such as bio-technology and herbal based industries.

STATISTIC OF CO-OPERATIVES (AS AT DISEMBER 2015)

NO.	FUNCTION	TOTAL COOPERATIVE	MEMBER	RM MILLION			COOPERATIVE MAKES PROFIT
				SHARE / FEES	ASSETS	TURNOVER	
1.	BANKING	2	982,175	3,308.54	92,141.04	10,527.56	1
2.	CREDIT	598	1,353,433	5,854.10	12,588.95	2,931.83	426
3.	AGRICULTURE	2,707	750,584	660.04	2,661.10	567.80	1,054
	▪ ADULTS	2,701	750,131	660.02	2,661.00	567.80	1,048
	▪ SCHOOL	6	453	0.01	0.09	0.11	6
4.	HOUSING	246	156,457	188.24	880.00	58.53	78
5.	INDUSTRY	282	18,203	11.25	79.88	22.08	93
6.	USERS	5,045	2,729,238	349.90	1,690.28	826.47	3,421
	▪ ADULTS	2,721	622,583	326.12	1,411.85	596.38	1,325
	▪ SCHOOL	2,324	2,106,655	23.78	278.43	230.09	2,096
7.	CONSTRUCTION	212	124,494	66.76	369.31	25.03	103
8.	TRANSPORTATION	466	149,197	68.44	311.83	433.71	311
9.	SERVICES	2,935	1,154,238	3,202.93	9,391.71	1,276.50	1,144
	▪ ADULT	2,930	1,154,115	3,202.92	9,391.70	1,276.50	1,142
	▪ SCHOOL	5	123	0.01	0.01	0.00	2
	TOTAL	12,493	7,418,019	13,710.19	120,144.10	16,669.50	6,631

LIST OF CO-OPERATIVES IN THE PLANTATION SECTOR (1)

NO	NAME OF COOPERATION
1	Koperasi Ladang Pekebun-Pekebun Kecil Malaysia Berhad
2	Koperasi Gabungan Pekebun Kecil Perak Berhad
3	Koperasi Pesara Negeri Johor Berhad
4	Koperasi Felda Bukit Bading Terengganu (KOBADING) Berhad
5	Koperasi Pekebun Kecil Daerah Larut Matang Berhad
6	Koperasi Peserta-Peserta Rancangan Felcra Seberang Perak Berhad
7	Koperasi Perladangan Kawasan Bagan Dato Perak Berhad
8	Koperasi Pekebun Kecil Daerah Batang Padang (Utara) Berhad

NO	NAME OF COOPERATION
9	Koperasi Melayu Mukim Sungai Batu Serdang Kedah Berhad
10	Koperasi Kemajuan Tanah Negeri Johor Berhad
11	Koperasi Pekebun Kecil Daerah Muar Berhad
12	Koperasi Bina Bersama Kampong Gajah Perak Berhad
13	Koperasi Kakitangan Sawit Kinabalu Sabah Berhad
14	Koperasi Kakitangan Jabatan Pertanian Sabah Berhad
15	Koperasi Ladang Sungai Tong Terengganu Berhad
16	Koperasi Peserta-Peserta Rancangan Felcra Gugusan Weng Baling Berhad

LIST OF CO-OPERATIVES IN THE PLANTATION SECTOR (2)

NO	NAME OF COOPERATION
17	Koperasi Pembangunan Kampung Tradisional Guar Perahu Pulau Pinang Berhad
18	Koperasi Polis Terengganu Berhad
19	Koperasi Pekebun Kecil Wilayah Johor Selatan Berhad
20	Koperasi Peserta-Peserta Rancangan Felcra Gugusan Sri Mendapat Melaka Berhad
21	Koperasi Petani Ketara Besut Berhad
22	Koperasi Nasip Kita Tawau Sabah Berhad
23	Koperasi LKPP Pahang Berhad

NO	NAME OF COOPERATION
24	Koperasi Peserta-Peserta Rancangan Felcra Setempat Teratak Batu Berhad
25	Koperasi Permodalan Melayu Negeri Johor Berhad
26	Koperasi Pekebun Kecil Jajahan Machang Kelantan Berhad
27	Koperasi Membeli dan Membuka Tanah Seri Cheeding Berhad
28	Koperasi Sri Nara Kampung Kundur Hulu Pedas Berhad
29	Koperasi Perbadanan Kemajuan Iktisad Negeri Kelantan Berhad
30	Koperasi Pekebun Kecil Daerah Marang (KOPEDAM) Berhad

LIST OF CO-OPERATIVES IN AGRICULTURAL & AGRO BASED INDUSTRY (1)

NO	NAME OF COOPERATION	NO	NAME OF COOPERATION
1	Koperasi Kakitangan Ladang Sungai Terah Berhad	9	Koperasi Penanam-Penanam Nenas Bukit Tandak Berhad
2	Koperasi Usahawan Cendawan Kelantan Berhad	10	Koperasi Pengusaha-Pengusaha Nanas Batu Pahat Berhad
3	Koperasi Pembangunan Pertanian Kota Bharu Berhad	11	Koperasi Keluarga Johar Rugayah Rengit Batu Pahat Berhad
4	Koperasi Keluarga Gemilang Pahang Berhad	12	Koperasi Usahawan Batu Pahat Berhad
5	Koperasi Keluarga Dayang Salhah Kuching Berhad	13	Koperasi Bela Rakyat Kawasan Marotai Tawau Berhad
6	Koperasi Warisan Haji Morshidi Miri Berhad	14	Koperasi Usahawan Nur Johor Berhad
7	Koperasi Usahawan Bumiputera Sarawak Berhad	15	Koperasi Semut Kapit Berhad
8	Koperasi Usahawan Burung Layang-Layang Kedah Berhad	16	Koperasi Al Falah Kedah Berhad

LIST OF CO-OPERATIVES IN AGRICULTURAL & AGRO BASED INDUSTRY (2)

NO	NAME OF COOPERATION
17	Koperasi Sejati Orang Asli Kampung Makmur Kinta Berhad
18	Koperasi Bukit Changgang Berhad
19	Koperasi Serbaguna Kaum Ibu Kubang Pasu Berhad
20	Koperasi Hayat Kedah Berhad
21	Koperasi Pekebun Kecil Daerah Kulim Berhad
22	Koperasi Ikatan Bukit Changgang Kuala Langat Berhad
23	Koperasi Peniaga-Peniaga Kecil Daerah Yan/Gurun Berhad

NO	NAME OF COOPERATION
24	Koperasi Peserta-Peserta Rancangan Felcra Gugusan Weng Baling Berhad
25	Koperasi Pembangunan Ekonomi Kawasan Tumpat Berhad
26	Koperasi Keusahawanan Kampung Permatang Pasir Kuala Langat Selangor Berhad
27	Koperasi Pekebun Getah Negeri Melaka Berhad
28	Koperasi Agro Maju Puchong Berhad
29	Koperasi Tenusu Selangor Berhad
30	Koperasi Peladangnita Kampung Gedok Tampin Berhad

STRENGTHENING THE CO-OPERATIVES PARTICIPATION IN THE PLANTATION SECTOR

- The government aims that the Malaysian palm oil industry will contribute a total of 178 billion ringgit to the gross national income in 2020. The government also does not want to get caught in this industry in the production of semi products exclusively. It is time for society and the country's palm oil producers to explore the production of downstream products based on palm oil that can offer lucrative returns. The palm oil industry is contained in the key economic areas of the country as one of the industry to lead the government's economic program Transformation Plan. But the industry is also faced with many challenges both in terms of labor shortage, terrain and fierce rival other world producers of cooking oil. Therefore, to remain competitive in this industry need to explore high-value downstream products while maintaining the strength of the upstream production.



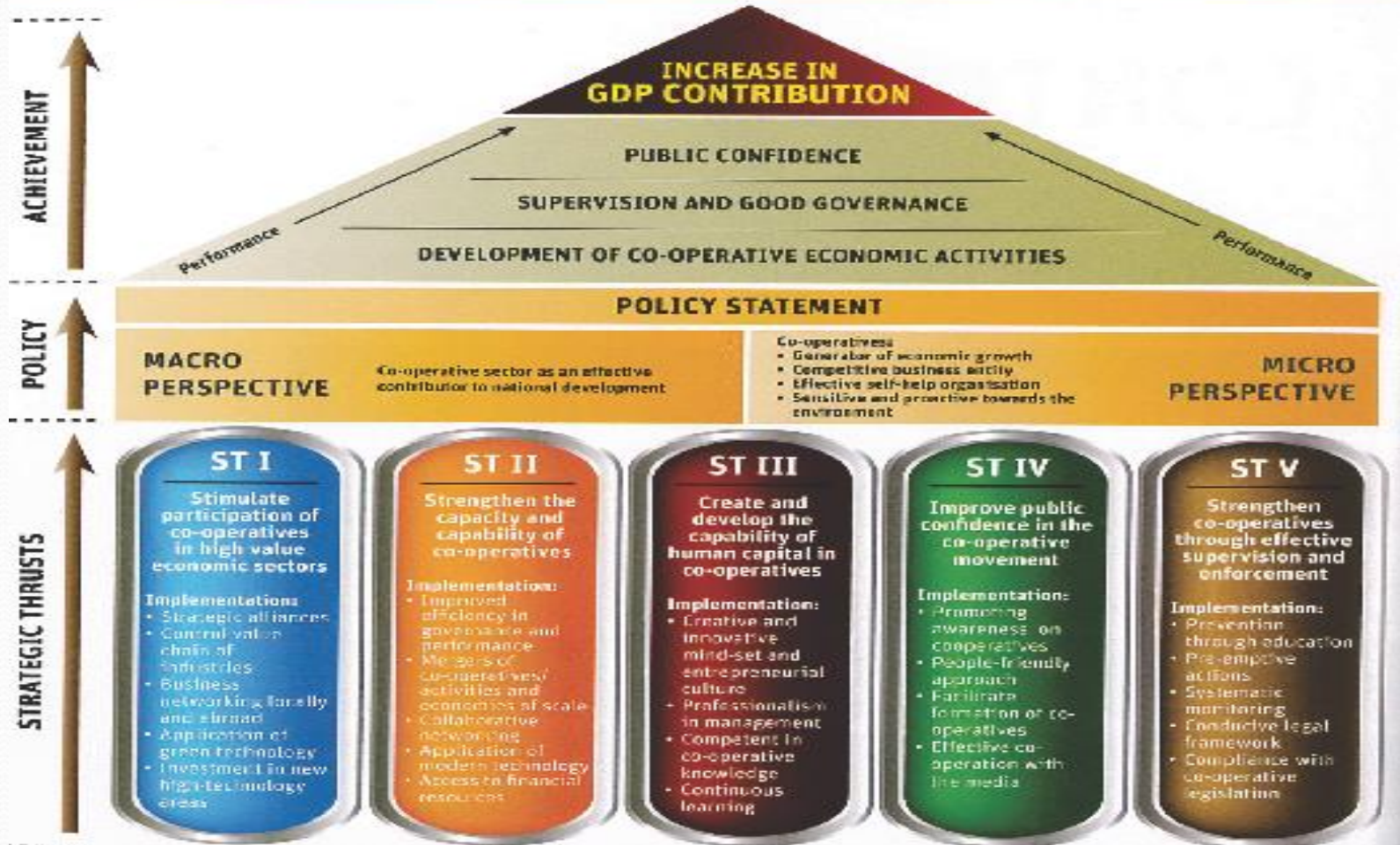
- 
- Palm oil industry chain can be segmented into segments of production of fresh fruit bunches, crude palm oil, oleo chemicals, beauty products, food, pharmaceutical and oil industries.
 - Oil palm plantations require large capital investments and also involve higher maintenance costs compared with other commodities perennial crops.
 - Therefore it is necessary to conduct an assessment of whether the project has achieved the goal to remain viable. Furthermore, the viability of the project is very important to determine whether or not the project can contribute to the achievement of the objectives of the cooperative movement turnover of 50 billion ringgit in 2020.

- The involvement of cooperatives in the plantation sector, particularly palm oil industry can be categorized into three main activities, namely the management of oil palm plantations, agricultural inputs and palm nursery. In terms of achievement, income from the plantation sector in 2014 amounted to 363.44 million ringgit compared with revenues in 2013 of 325.92 million ringgit. With estimated average growth rate of 6 percent a year, the income from this sector is expected to reach as much as 463 million ringgit in 2020.

(II)

NATIONAL CO-OPERATIVE POLICY (NCP) – ECONOMIC ENHANCEMENT THROUGH CO-OPERATIVE

LANDSCAPE OF THE NATIONAL CO-OPERATIVE POLICY 2011 – 2020



CO-OPERATIVE IDENTITY

- The International Co-operative Alliance (ICA) has defined co-operative as ***an autonomous association of persons united voluntarily to meet their common economic, social, and cultural needs and aspirations through a jointly-owned and democratically-controlled enterprise.***
- Co-operatives are organisations based on the concept of self-help and operate in accordance with their own set of principles. As social enterprises, co-operatives adopt the economic approach to achieve the objectives of improving the livelihood of their members and addressing issues concerning local communities. Certain groups of people, namely the poor, single mothers, the disabled and youth can upgrade their socio-economic standard through co-operatives.
- Co-operatives provide micro-financing, create employment and business opportunities, as well as optimise the utilisation of local resources. The increase in social and human capital can be achieved through co-operatives. Co-operative business is capable of transforming the economic and social status of members and contributing towards the welfare of the community.

CO-OPERATIVE DEFINITION, VALUES AND PRINCIPLES (1)

DEFINITION

A co-operative is an autonomous association of persons united voluntarily to meet their common economic, social and cultural needs and aspirations through a jointly-owned and democratically-controlled enterprise.

VALUES

Co-operatives are based on the values of self-help, self-responsibility, democracy, equality, equity and solidarity. In the tradition of their founders, co-operative members believe in the ethical values of honesty, openness, social responsibility and caring for others.

CO-OPERATIVE DEFINITION, VALUES AND PRINCIPLES (2)

PRINCIPLES

The co-operative principles are guidelines by which co-operatives put their values into practice.

- **Voluntary and Open Membership**
- **Democratic Member Control**
- **Member Economic Participation**
- **Autonomy and Independence**
- **Education, Training and Information**
- **Co-operation among Co-operatives**
- **Concern for Community**



CO-OPERATIVE LEGISLATION & POLICY STATEMENT

CO-OP LEGISLATION &

POLICY STATEMENT

Macro Perspective

Co-operative Sector as an Effective Contributor to National Development

Micro Perspective

CO-OPERATIVES

Generator of economic growth

Competitive business entity

Effective self-help organisation

Sensitive and proactive towards the environment

OBJECTIVE OF NCP II

Co-operatives :

- **Contribute 5% to National Product by 2013 and 10% by 2020**
- **Improve the Socio-economic Status of Members**
- **Concern for the Environment**
- **Responsible Corporate Citizens**

STRATEGIC THRUSTS

Strategic thrusts for the development of co-operatives:

Strategic Thrust I

Stimulate participation of co-operatives in high value economic sector

Strategic Thrust II

Strengthen the capacity and capability of co-operatives

Strategic Thrust III

Create and develop the capability of human capital in co-operatives

Strategic Thrust IV

Improve public confidence in the co-operative movement

Strategic Thrust V

Strengthen co-operatives through effective supervision and enforcement

(III) **ECONOMIC ACTIVITIES (KEY RESULT AREA (KRA) & EPP)**

- **There are eight (8) economic key result area**
- **To transform the cooperative movement into an effective contributor toward national development**

ECONOMIC KRA

a) FINANCIAL SERVICES



b) WHOLESALE AND RETAIL

ECONOMIC KRA

c) TOURISM, PERSONAL AND HEALTHCARE



d) AGRICULTURE & AGRO-BASED INDUSTRY

ECONOMIC KRA

e) PROPERTY DEVELOPMENT & BUILDING INDUSTRY



f) PLANTATION

ECONOMIC KRA

g) COMMUNITY COOPERATIVE



h) INNOVATION, TECHNOLOGY & TELECOMMUNICATIONS

CO-OPERATIVE BUSINESS DEVELOPMENT

PUTRAJAYA DECLARATION 2012

- To stimulate and develop co-operative businesses by identifying and promoting new business, strengthening existing businesses and create a network of cooperation at national and international level

CO-OPERATIVE CONTRIBUTION TARGET

- **As the 3rd Economic Sector in the Country, cooperative are entrusted to contribute to economic development by way of:**
 - ✓ **Deal with problem of cost of living**
 - ✓ **Develop the rural areas**
 - ✓ **Increasing the standard of living of the low income household**
 - ✓ **To prepare activities that contribute to Malaysia's economy towards becoming a high income nation**

(III)

ENTRY POINT PROJECT (EPP) OF PLANTATION INDUSTRY

THREE (3) EPP OF PLANTATION INDUSTRY

- i. Estate Management
- ii. Distribution Centre of Agriculture Input
- iii. Oil Palm Nursery



Estate Management

- Among the cooperative that became the anchor is a cooperative NLFCS Berhad, Batu Pahat Regional Smallholders Cooperative Berhad, FELCRA Malaysia Cooperative Berhad and Cooperative Perak Malay Forest Officer Cooperative Berhad. These cooperatives are in large clusters where the total income exceeds RM5 million a year
- In palm plantation management activities, cooperative involved in managing oil palm plantations owned by cooperatives or oil palm plantations owned by members and partly manage oil palm plantations owned by third parties.

- In addition, most of the cooperatives under FELCRA, RISDA and FELDA take the contract to transport fresh fruit bunches (FFB) and works contract for maintenance of oil fields from these agencies
- In addition, the plantation sector is also creating a chain of other economic activities such as the transport of fresh fruit bunches (FFB), serviced rental equipment such as bulldozers and excavators for the maintenance of oil palm plantations, solemn harvest oil palm fruit ripening, picking loose fruits relay, contract the construction of infrastructure in the fields of oil palm and a variety of other commercial activities.



Distribution Centre of Agriculture Input

- One of the operatives involved in the supply of agricultural inputs on a large scale is Malaysia Smallholders Farm Cooperative Berhad. Products manufactured include fertilizer, chemicals (herbicides), insects poison, fungicides, rat poison and agricultural equipment such as masks, overalls and the pump. Agricultural input sales for 2013 amounted to 17.34 million ringgit.



Oil Palm Nursery

- Cooperatives involvement in the oil palm plantation sector also involves oil palm nursery. As of December 2013, a total 27 Sustainable Palm Oil Grower Cooperatives Berhad has been registered and accounted for a turnover of 1.6 million ringgit. The establishment of these cooperatives are to ensure the production of oil palm fruits which are environmentally friendly. This is a strategic move with the government of the Malaysian Palm Oil Board to increase the productivity and quality of palm oil.



(IV)

INTEGRATED FARMING

- The integration of farming in plantations has benefited cooperatives in term of saving labor cost, reducing weeding cost, lower usage of chemical fertilizers and the improvement of soil structure through addition of organic matter to the soil
- Among ruminants the potential for integration are cattle, buffalo, sheep, goat as well as chicken.
- Several crops such as sugarcane, banana, pineapple have also been identified suitable to be integrated in immature plantation.

COOPERATIVE INVOLVEMENT IN THE PLANTATION & AGRICULTURE INDUSTRY

KOPERASI PEKEBUN KECIL WILAYAH JOHOR SELATAN BERHAD (KOPRIS)

Koperasi Pekebun Kecil Wilayah Johor Selatan Berhad (KOPRIS)

- No. 47A, Jalan Uda Utama 3/14, Bandar Uda Utama, 81200 Johor Bharu, Johor.
- Tel : +607-2343778
- Fax : +607-2364778
- Kopris_berhad@yahoo.com.my
- **Aktiviti :**
 - Oil Palm Plantation
 - Raring Cattle
 - Raring Goat
 - Raring Chicken
 - Dialysis Center
 - Agro Tourism



COOPERATIVE INVOLVEMENT IN THE PLANTATION & AGRICULTURE INDUSTRY

KOPERASI LADANG PEKEBUN-PEKEBUN KECIL MALAYSIA BERHAD

5

PERTANIAN DAN INDUSTRI ASAS TANI KOPERASI LADANG PEKEBUN- PEKEBUN KECIL MALAYSIA BERHAD

3-5-14, Prima Perdana,
Jalan Setiaawang 11,
Terasa Setiaawang,
54300 Kuala Lumpur.
03-4256 6299/ 4256 6376
03-4257 3513
kg@koperasi-ladang.com
www.koperasi-ladang.com



Koperasi Ladang Pekebun-Pkebun Kecil Malaysia Berhad adalah sebuah koperasi yang terlibat dalam bidang perdagangan kelapa sawit serta kegiatan lain yang berkaitan dengan pertanian.

Koperasi ini telah memulakan projek ternakan lembu secara integrasi pada tahun 1997 di Ladang Sungai Ambat, Mersing, Johor. Projek dimulakan dengan menggunakan dana dalaman dan kemudiannya dilaburkan melalui pembiayaan yang diperolehi daripada Agrobank.

Berkutan daripada kejayaan projek yang dilaksanakan ini, koperasi telah mengembangkan projek berkenaan di sebuah lagi ladang sawit miliknya iaitu Ladang Bukit Kemamat, Sungai Lui, Negeri Sembilan pada tahun 2006, dengan dibayai oleh dana dalaman sepenuhnya.

Sejak ternakan lembu dilaksanakan di kedua-dua ladang, jumlah lembu yang diternak telah di antara 900 ekor hingga 1,100 ekor dan majoriti daripada lembu yang diternak terdiri daripada baka Kedah-Kelantan (KK).

Lembu diternak menggunakan konsep ragutan bebas free range di dalam ladang sawit di mana pengendalian lembu dikawal menggunakan pager elektrik mudah-alih.

Matlamat projek ternakan lembu ini adalah untuk mengurangkan kos kawalan rumpai dan menghasilkan pendapatan tambahan kepada koperasi.

Pasaran utama untuk lembu yang diternak ialah untuk tujuan korban dan jumlah keuntungan projek ternakan lembu sejak sepuluh tahun yang lepas adalah melebihi RM200,000 setahun. Pada 18 Julai 2009, Suruhanjaya Koperasi Malaysia telah melantik Koperasi Ladang sebagai mentor kepada sepuluh buah koperasi mentee bagi Projek Ternakan Lembu Ragutan Bebas Secara Integrasi yang dilaksanakannya.

AKTIVITI

- Pengurusan Ladang
- Kontrak Membangunkan Ladang
- Ternakan Lembu
- Perniagaan Input dan Peralatan Pertanian
- Tapak Semaian Sawit
- Pengurusan Harta
- Aktiviti lain berkaitan perdagangan, seperti kontrak penyelenggaraan ladang dan membeli kelapa sawit

14



COOPERATIVE INVOLVEMENT IN THE PLANTATION & AGRICULTURE INDUSTRY

KOPERASI PEKEBUN-PEKEBUN KECIL BATU 67 KLUANG BERHAD

55



PERTANIAN DAN INDUSTRI ASAS TANI

**KOPERASI PEKEBUN - PEKEBUN
KECIL BATU 67 KLUANG BERHAD**

No 7, Taman Sri Klang,
86000 Klang, Johor.
07 7764 076

Koperasi Pekebun-Pekabun Kecil Batu 67 Kluang Berhad telah menjalankan aktiviti penternakan itik dengan usahasama seorang penternak itik yang mempunyai pengalaman luas di dalam aktiviti ini sejak tahun 2010.

Sebanyak 5,000 ekor itik telah ditanam pada fasa 1. Itik-itik ini ditanam di ladang kelapa sawit milik koperasi seluas 5 ekor tanpa memusnahkan pokok kelapa sawit yang sedia ada bagi memelihara eco-sistem di kawasan tersebut. Baka itik yang ditanam adalah merupakan baka kacukan Khaki Campbell dari Thailand, Taiwan dan Australia.

Telur itik yang diperolehi daripada aktiviti penternakan ini dijual dalam bentuk telur itik segar ataupun diproses menjadi telur masin oleh koperasi. Purata penghasilan telur itik sebulan di ladang ini adalah kira-kira 4,250 biji bagi 5,000 ekor itik dengan nilai jualan kasar mencecah RM51,000.

Kini, koperasi bercadang untuk menambah jumlah itik di ladang bagi menampung permintaan tinggi terhadap telur itik masin dan segar di pasaran dengan jumlah ternakan itik sehingga 10,000 ekor bagi fasa 2 dan 15,000 ekor itik untuk fasa 3. Secara tidak langsung, penghasilan telur itik akan bertambah seterusnya dapat membantu meningkatkan pendapatan koperasi.



COOPERATIVE INVOLVEMENT IN THE PLANTATION & AGRICULTURE INDUSTRY

KOPERASI NLFCS BERHAD

PERLADANGAN
KOPERASI NLFCS BERHAD

Level 10, Wisma Tunjayanbarba,
Jalan Sulaiman,
Peti Surat 22133,
50708 Kuala Lumpur.

05 2273 1250
05 2274 6826
nabade@ipm.net.my
www.nlfcs.com.my

Didaftarkan pada tahun 1960 dengan dianggotai oleh pekerja-pekerja ladang berbangsa India, kini anggota Koperasi NLFCS Berhad (dahulunya dikenali sebagai Koperasi Permodalan Kebangsaan Tanah Berhad) boleh berbangga kerana koperasi ini terus berkembang dan telah muncul sebagai satu daripada sepuluh koperasi terbesar di Malaysia.

Selain bergiat dalam aktiviti perumahan, pendidikan dan kewangan, koperasi aktif dalam aktiviti perladangan yang menjadi teras penzuhannya. Pada masa ini koperasi turut mengusahakan dua buah ladang kelapa seluas 654.3 hektar di Daerah Hilir Perak iaitu Kuala Perak Estate (472.9 hektar) dan Baglan Pasir Estate (181.4 hektar). Kedua-dua ladang ini ditanam dengan kelapa jenis MATAG untuk pasaran kelapa muda serta jenis MAMA untuk pasaran kelapa kering. Bagi tahun 2012 dan 2013, lebih daripada 11 juta biji kelapa telah dihasilkan oleh ladang koperasi ini.

Kelayaan koperasi menghasilkan kelapa berkaualiti terbukti apabila koperasi merandatangani kontrak dengan Jabatan Pertanian Malaysia pada tahun 2013 untuk membekalkan 25,000 polak anak kelapa (seedling) MATAG setahun selama lima tahun mulai November 2014.



Koperasi turut terlibat dalam industri penghasilan serbuk tempung kelapa (coconut shell powder) yang digunakan sebagai salah satu bahan utama dalam pembuatan plywood dan laminated board. Koperasi telah mengekspor lebih kurang 20 metrik tan setahun ke Jepun serta membekalkan 735 metrik tan untuk pasaran tempatan bagi tahun 2013.

KEJAYAAN KOPERASI

- Anugerah Khas Aktiviti Perladangan tahun 2005 dan 2004
- Anugerah Perdana (Anugerah Utama) 2007
- Anugerah Koperasi Cemerlang (Kluster Besar) bagi tahun 2010 dan 2011
- Anugerah Koperasi Cemerlang tahun 2012
- Anugerah Khas Koperasi 2013 (Angkasa WP)



COOPERATIVE INVOLVEMENT IN THE PLANTATION & AGRICULTURE INDUSTRY

KOPERASI WARISAN PEGAWAI HUTAN MELAYU NEGERI PERAK BERHAD



PERLADANGAN

KOPERASI WARISAN PEGAWAI HUTAN MELAYU NEGERI PERAK BERHAD

Alam 86, Tingkat 3,
Jalan Kangar, 30000 Kuala Kangsar,
Perak
05 7777 530
05 7777 511
kop.pegahutanmelayunegeriperak@com.my

Koperasi Pegawai Hutan Melayu Negeri Perak Berhad terletak
di tengah-tengah Bandar Diraja Kuala Kangsar, Perak.

Mengamalkan konsep "Pertanian adalah Periagaan", koperasi ini telah berjaya menjadikan aktiviti perladangan sebagai penjana utama ekonomi koperasi dengan perolehan RM6.5 juta bagi tahun 2013. Koperasi yang ditubuhkan pada tahun 1961 ini memulakan aktiviti dengan memohon tanah seluas 2,000 ekar daripada kerajaan negeri menerusi pinjaman pembiayaan daripada Bank Pertanian. Tanah hutan telah dijadikan ladang kelapa sawit di sekitar tahun 1980. Seterusnya koperasi telah membeli tanah Cina Estate dengan mengusahakan ladang getah dan kelapa sawit. Kini koperasi boleh berbangga dengan pemilikan tanah seluas 1,466.2 hektar yang meletakkan koperasi di tempat ke-93 dalam Indeks 100 Koperasi Terbaik 2013.

Berdasarkan prinsip apa yang ditanam, itulah yang akan dituai, apa yang dituai itulah milik kita, koperasi bertapak menerusi aktiviti semaian benih daripada tapak semaian sendiri yang berkeluasan 10 ekar dengan tanaman anak benih sekitar 40,000 ke 50,000 pokok. Tapak semaian koperasi menyediakan bahan semaian yang berkualiti tinggi dan tulen bagi memulakan pulangan hasil yang tinggi di ladang milik koperasi. Pada masa ini, tumpuan adalah untuk memenuhi keperluan anak benih bagi ladang milik koperasi. Kapasiti pengeluaran anak benih akan ditingkatkan bagi memenuhi permintaan pasaran tempatan.



AKTIVITI

- Perladangan Kelapa Sawit dan Getah
- Pengeluaran Kayu Acaang
- Semaian Anak Benih Kelapa Sawit

KEJAYAAN KOPERASI

- Anugerah Kualiti Koperasi (Anugerah Kepatuhan Pendukung Koperasi Negeri Perak tahun 1995)
- Anugerah Khas Aktiviti Perladangan dari Jabatan Pembangunan Koperasi tahun 2005
- Anugerah Khas Aktiviti Perindustrian dari Jabatan Pembangunan Koperasi tahun 2007
- Anugerah Perdana Sempena Hari Koperasi Negara tahun 2012



COOPERATIVE INVOLVEMENT IN THE PLANTATION & AGRICULTURE INDUSTRY

KOPERASI SERBAUSAHA MAKMUR BERHAD

06



PERLADANGAN

KOPERASI SERBAUSAHA MAKMUR BERHAD

No B 125, Tingkat 2 Jalan Makloma,
25000, Kemantan, Pahang.
☎ 09 5177 880 / 09 5177 977
☎ 09 5137 390
✉ info@serba@kosma.com.my

Didaftarkan sebagai Syarikat Bekjasama-sama Ladang Kelapa Sawit Pegawai-pegawai Kerajaan Negeri Pahang Berhad pada tahun 1967, kini koperasi ini dikenali sebagai Koperasi Serbausaha Makmur Berhad. Pengiktirafan yang diperolehi oleh koperasi dalam bidang perladangan sempena Hari Koperasi Negara 2013, telah menjulang koperasi ini sebagai koperasi perladangan yang berjaya di Negeri Pahang.

Aktiviti perladangan kelapa sawit merupakan aktiviti utama perniagaan ekonomi koperasi ini dengan pemilikan berjumlah RM127.4 juta bagi tahun 2013. Kini koperasi telah memiliki 7 buah ladang kelapa sawit dengan jumlah keluasan sebanyak 15,588.75 hektar.

Bertarikan pengurusan secara profesional sebagai faktor kejayaannya, kini koperasi telah mengembangkan lebihan dananya dalam bentuk pelaburan dengan menceburi bidang perhotelan.

AKTIVITI

- Perladangan Kelapa Sawit
- Pengurusan Perhotelan
- Semalan Anak Benih Kelapa Sawit.



KEJAYAAN KOPERASI

- Anugerah Khas Koperasi Kluster Besar sempena Hari Koperasi Peringkat Negeri Pahang 2012
- Anugerah Koperasi Terbaik Sektor Perladangan Sempena Hari Koperasi Negara 2013



COOPERATIVE INVOLVEMENT IN THE PLANTATION & AGRICULTURE INDUSTRY

KOPERASI SERBAGUNA ANAK-ANAK SELANGOR BERHAD (KOSAS)



PERLADANGAN KOPERASI SERBAGUNA ANAK-ANAK SELANGOR BERHAD (KOSAS)

Lot A-03, Plaza Kelana Jaya,
Jalan SS7/13B,
47301 Petaling Jaya, Selangor.
03 7873 1181
www.kosas.com.my

Koperasi Serbaguna Anak-Anak Selangor Berhad (KOSAS) telah mengusahakan ladang nanas yang terletak di Kampung Kundang, Kuala Langat, Selangor pada Januari 2005. Pada peringkat permulaan, KOSAS hanya menanam nanas jenis N36 diikuti dengan Josephine dan MD2.

Mengikut perancangan, KOSAS akan menggantikan nanas jenis N36 dan Josephine dengan MD2 yang mempunyai nilai pasaran yang tinggi di peringkat antarabangsa. Ladang nanas KOSAS mampu memberi keuntungan dan pulangan lumayan kepada KOSAS.

Hasil kerjasama dengan Agensi Nuklear Malaysia (ANM), KOSAS telah berjaya mengeluarkan tuai kultur MD2 yang digunakan sebagai benih tanaman. Purata pengeluaran nanas MD2 adalah kira-kira 30,000 biji sebulan.

- Aktiviti-aktiviti lain koperasi :
- Ar-Rahmu Exchange
 - Aktiviti perladangan kelapa sawit



KEJAYAAN KOPERASI

- Anugerah Kualiti Tahun 1995 bagi Projek Perumahan Koperasi
- Anugerah Aktiviti Pertanian Secara Komersil pada tahun 2012 di Hari Koperasi Negara
- Anugerah Koperasi Terbaik Kategori Pertanian dan Industri Asas Tani, Hari Koperasi Negara 2014



COOPERATIVE INVOLVEMENT IN THE PLANTATION & AGRICULTURE INDUSTRY

KOPERASI JURUKUR TANAH BERLESEN BERHAD

18



PERTANIAN DAN INDUSTRI ASAS TANI KOPERASI JURUKUR TANAH BERLESEN BERHAD

2721, Jalan Permatas 4,
Taman Permatas, Hulu Kelang,
51300 Kuala Lumpur.
03 4337 9277 / 03 4187 9277
www.kojuta.com

Koperasi Jurukur Tanah Berlesen Berhad (KOJUTA) telah menjalankan aktiviti penternakan ayam pedaging secara tertutup pada tahun 2009. Koperasi memulakan perniagaan dengan membina dua buah reban ayam yang berkapasiti sebanyak 20,000 ekor pengeluaran ayam bagi setiap reban.

Sebanyak enam pusingan pengeluaran ayam boleh dilakukan dalam setahun dan koperasi ini menjalankan aktiviti penternakan ayam pedaging secara ledang kontrak bersama Syarikat Charoen Pokphand Sdn. Bhd.

Kini, projek penternakan ayam pedaging secara tertutup ini telah menjadi sumber pendapatan utama kepada KOJUTA. Dengan hasil pengeluaran ayam sebanyak 82,000 ekor sepinggan, KOJUTA dapat membantu dalam mengatasi masalah kekurangan bekalan ayam di Malaysia terutamanya pada musim perayaan.

AKTIVITI

- Membeli, memiliki, menyewa dan memaju hartanah
- Pembinaan - sivil, struktur, mekanikal, elektrik dan bangunan
- Memberi perkhidmatan/pengurusan tiket-tiket penerbangan
- Menjalankan aktiviti Skim Pajak Gada Ai-Rahnu
- Menjalankan aktiviti pertanian, perladangan, pembalakan dan ternakan



KEJAYAAN KOPERASI

- Anugerah Koperasi Terbaik - EPP Pertanian dan Industri Asas Tani, Hari Koperasi Negara 2013.



19



(V) **THE WAY FORWARD**

KEY PERFORMANCE INDICATOR (KPI) OF PLANTATION (2011-2020)

- **Estate Management**
- **Palm Oil Nursery**
- **Distribution Centre of Agriculture**

KEY PERFORMANCE INDICATOR (KPI) OF PLANTATION (2011-2020)

PRODUCT / ACTIVITIES	TARGET (2016-2020)				
	2016	2017	2018	2019	2020
Estate Management	2 mentee	2 mentee	2 mentee	2 mentee	2 mentee
Palm Oil Nursery	2 mentee	2 mentee	2 mentee	2 mentee	2 mentee
Distribution Centre of Agriculture	2 mentee	2 mentee	2 mentee	2 mentee	2 mentee

(VI)

IMPLEMENTATION MECHANISM & ACHIEVEMENT

- The implementation of the NCP 2011 – 2020 will extend over a 10 year period comprising of three phases, namely short-term (January 2011 to December 2012), medium-term (January 2013 to December 2015) and long-term (January 2016 to December 2020). All the established strategic thrusts will be implemented simultaneously, however the achievements can only be seen either in the first, second or third phase, according to the stipulated time frames set for the deliverables.
- The task force will prepare an action plan outlining the programs, activities, targets and implementation time frames. To ensure the implementation of the programs and activities, a three level committee, namely the monitoring committee, implementation committee and working committee will be established.

IMPLEMENTATION COMMITTEE

IMPLEMENTATION MONITORING COMMITTEE

- Secretary General or Deputy Secretary General of Ministry - Chairman
- Executive Chairman or Deputy Executive Chairman of MCSC
- Policy Division of Ministry
- MKM Representative
- ANGKASA Representative
- Co-operative Representative
- Secretariat – Co-operative Division of the responsible Ministry.

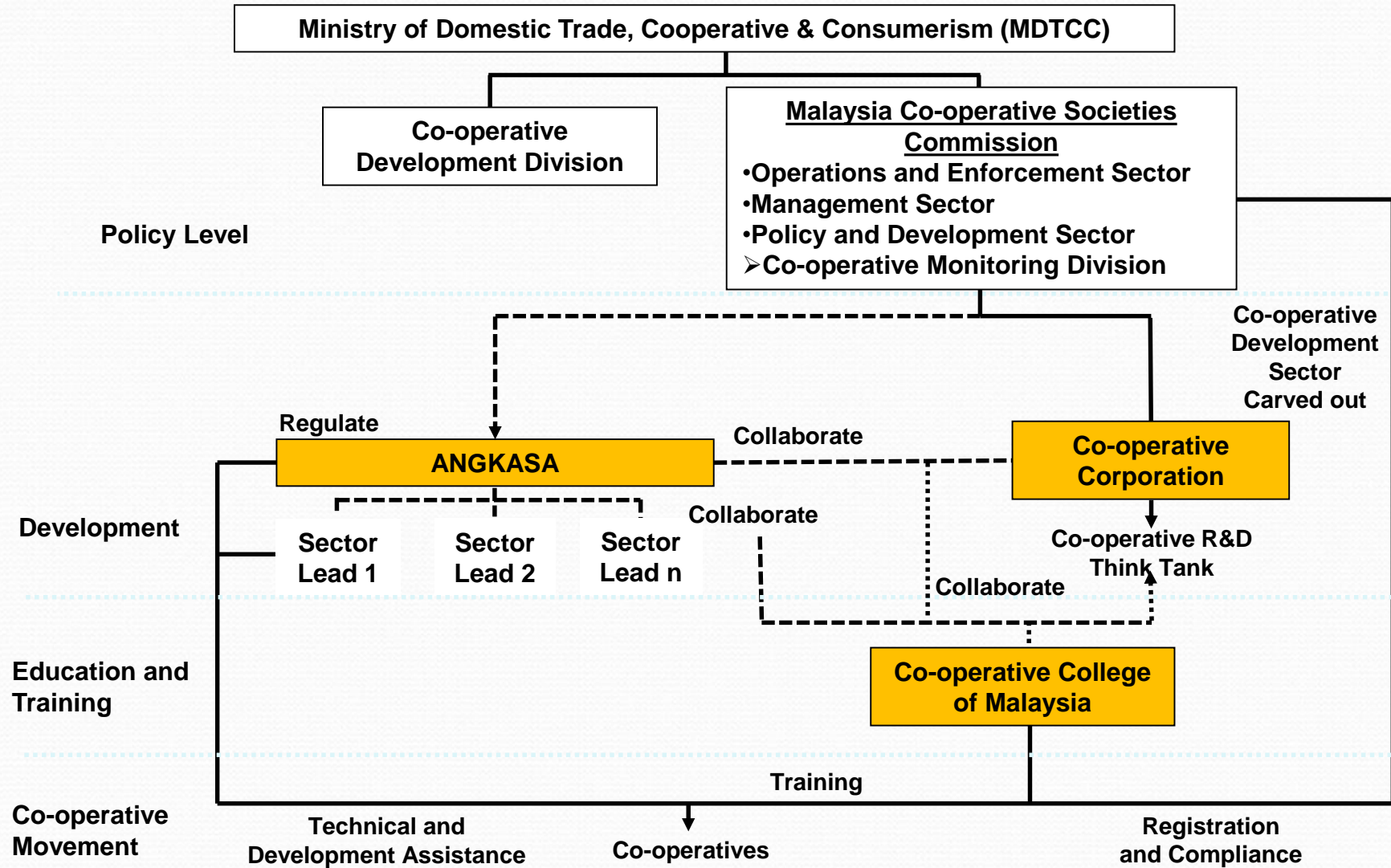
IMPLEMENTATION COMMITTEE

- Executive Chairman of MCSC - Chairman
- Deputy Executive Chairman of MCSC
- Heads of Sector in MCSC
- Directors of relevant Divisions in MCSC
- MKM and ANGKASA representative
- Invalid Members (Selected supporting agencies)
- Secretariat - MCSC

WORKING COMMITTEE

- Director of Division in MCSC or Director of MKM - Chairman
- Officers of Divisions in MCSC or Officers from MKM and ANGKASA
- Secretariat – MCSC or MKM

NEW CO-OPERATIVE MOVEMENT STRUCTURE



ACHIEVMENT

The NCP 2011 – 2020 outlines initiatives for the transformation of the co-operative movement into a competitive co-operative sector and to enable it to become an active player in the national economy. The ultimate objective is for the co-operative sector to increase its contribution to National Product.

Achievements by the implementation of the policy can be measured through three key result areas.

- Development of Co-operative Economic Activities
- Supervision and Governance
- Public Confidence and Acceptance of Co-operatives

CONCLUSION

- The problems inherent in the cooperatives involvement in the plantation industry require a review of directions and strategies to overcome them.
- Efforts have be made to strengthen cooperation and develop strategic alliances between cooperatives
- New ideas such as mentoring, mergers between cooperatives, cooperatives group business venture, integrated farming have been introduce
- Integrating ruminants as well as crops will ensure long term profitability as well as sustainability of the plantation industry of
- Sustainable efforts for the cooperative role in the management & integrated farming to plantation industry via 7Es (Education, Engagement, Empowerment, Entrepreneurship, Employment, Expansion & Empathy)

THANK YOU

